

CHISEL reveals the shape of light with soft luminous gradients and textures that add depth and character to any design. 5 forms, 4 luminous effects and 3 textured patterns allow for endless options to create clusters and unique layouts that deliver high quality volumetric lighting for practical performance and design impact.

Project:

Catalog Number:

DO NOT TYPE HERE. Autopopulated field.

Specification Features

Housing

Extruded aluminum housing. 2'x2' 20 lbs.

Finish

Painted after fabrication, high reflectance matte white.

Reflector

High-impact, 97% reflective vacuum-formed polymer reflector with textured pattern and satin white finish.

Mounting

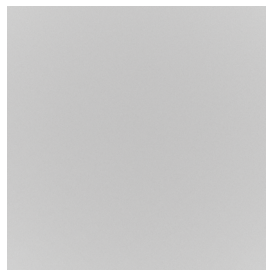
Recessed. Available 9/16" and 15/16" flat, 9/16" screw slot or 9/16" narrow.

Lens

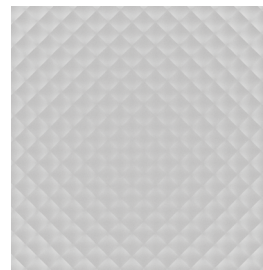
Clear acrylic sanitary lens options seals off aperture for easy wipe down in healthcare applications.

See page 2 for additional specifications.

Texture



MNML

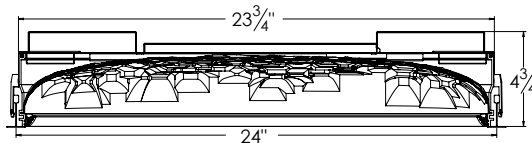


WVE



PYR

Section View



Declare.

eldoLED
your product | our drive

Ordering

Example: CHSL 2X2 G9 80CRI TUWH RHYR 3000LM PYR 2SDP DARK 120 NLT

CHSL	2X2					
Series	Size	Ceiling Trim	LED Color Rendering	Dynamic Feature	Dynamic Range	LED Output ²
CHSL	2X2 2'X2'	DF Regular tee slot ¹ G9 9/16" inverted tee G15 15/16" inverted tee	80CRI 80+ CRI 90CRI 90+ CRI	TUWH Tunable white	PROR Productivity range (3000-5000K) RHYR Rhythm range (2700-6500K)	1000LM 1000 Lumens 1500LM 1500 Lumens 2000LM 2000 Lumens 2500LM 2500 Lumens 3000LM 3000 Lumens 3500LM 3500 Lumens 4000LM 4000 Lumens
Texture	Directional Gradient	Minimum Dimming Level	Voltage	Emergency Options	Control Input	Options
MNML Minimalist	1SD Side	DARK Constant Current, Dimming to < 1%	120 120V 277 277V 347 347V	E10WCP ⁴ 10-watt emergency battery pack EMG ⁴ Emergency generator power	NLT nLight with nTune interface	SNL Sanitary lens AMF ⁵ Anti-microbial finish
WVE Weave	2SDP Parallel					
PYR Pyramid	2SDPO ³ 2 sides, Parallel opposite 2SDC Corner 4SD All 4SDPO ³ 4 sides, Parallel opposite 4SDCO ³ 4 sides, Corner opposite See page 3 for detailed explanation of Corner & Parallel Opposite options.					

Notes

1. Available for 9/16" grid only.
2. See table for delivered lumens/fixture.
3. Opposite sides contrasting CCT.
4. Not available with 347 option.
5. Must select SNL with AMF



Specification Features (continued)

Electrical

Long-life LEDs, coupled with high-efficiency drivers, provide superior quantity and quality of illumination for extended service life. 80% LED lumen maintenance at 60,000 hours (L80/60,000).

Color Consistency

The Acuity Brands circuit boards for the linear LED components use a precise binning algorithm which creates a consistent color temperature from board to board. Color variation is no greater than a 2.5 Step MacAdam (2.5SDCM) along the black body locus from board to board.

Driver

eldoLED® driver provides natural dimming with smooth, continuous and flicker-free deep dimming. Supports operation between 120VAC and 277 VAC, with low inrush current (NEMA 410) and THD < 20%. Meets FCC Title 47 C.F.R. 15 Class A or Class B requirements. Lutron high performance driver options also available.

Mainstream Dynamic Tunable White with nTune Technology

nTune is an all digital light color temperature control within an nLight enabled luminaire. This brings tunable white lighting control into the mainstream with repeatable, consistent results in an economical luminaire form and system for everyday applications. Designers and facility operators are granted the freedom to tie scenes to specific activities or to complement colors or materials within a visual environment.

Certification

UL Certified to meet U.S. and Canadian standards, rated for damp locations.

Healthcare Applications

This fixture is suitable for use in healthcare applications such as patient rooms, nursing stations, long term care and hallways when the optional sanitary lens and antimicrobial paint are specified.

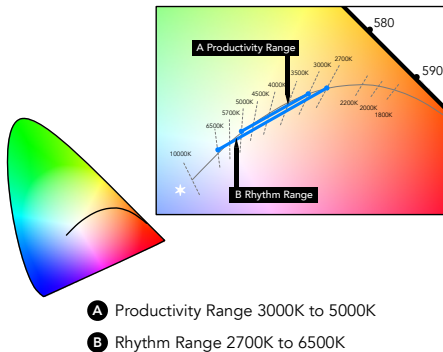
Warranty

5-year limited warranty. Complete warranty terms located at: www.acuitybrands.com/support/warranty/terms-and-conditions

Note: Actual performance may differ as a result of end-user environment and application.

All values are design or typical values, measured under laboratory conditions at 25 °C.

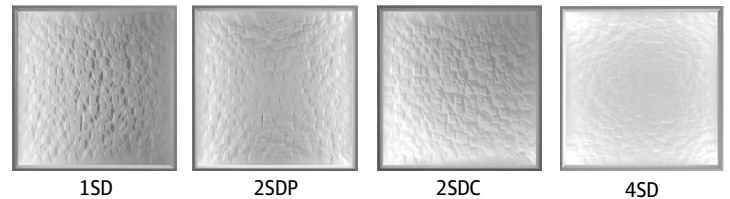
Specifications subject to change without notice.



Tunable White GPHD

- Gamut:** One dimensional warm-Cool
- Path:** Direct 3000K to 5000k (Productivity Range) or 2700K to 6500K (Rhythm Range)
- Handle:** Two Natural Language Handles: Intensity and CCT
- Data:** nLight with nTune technology for both handles of control

Directional Gradient



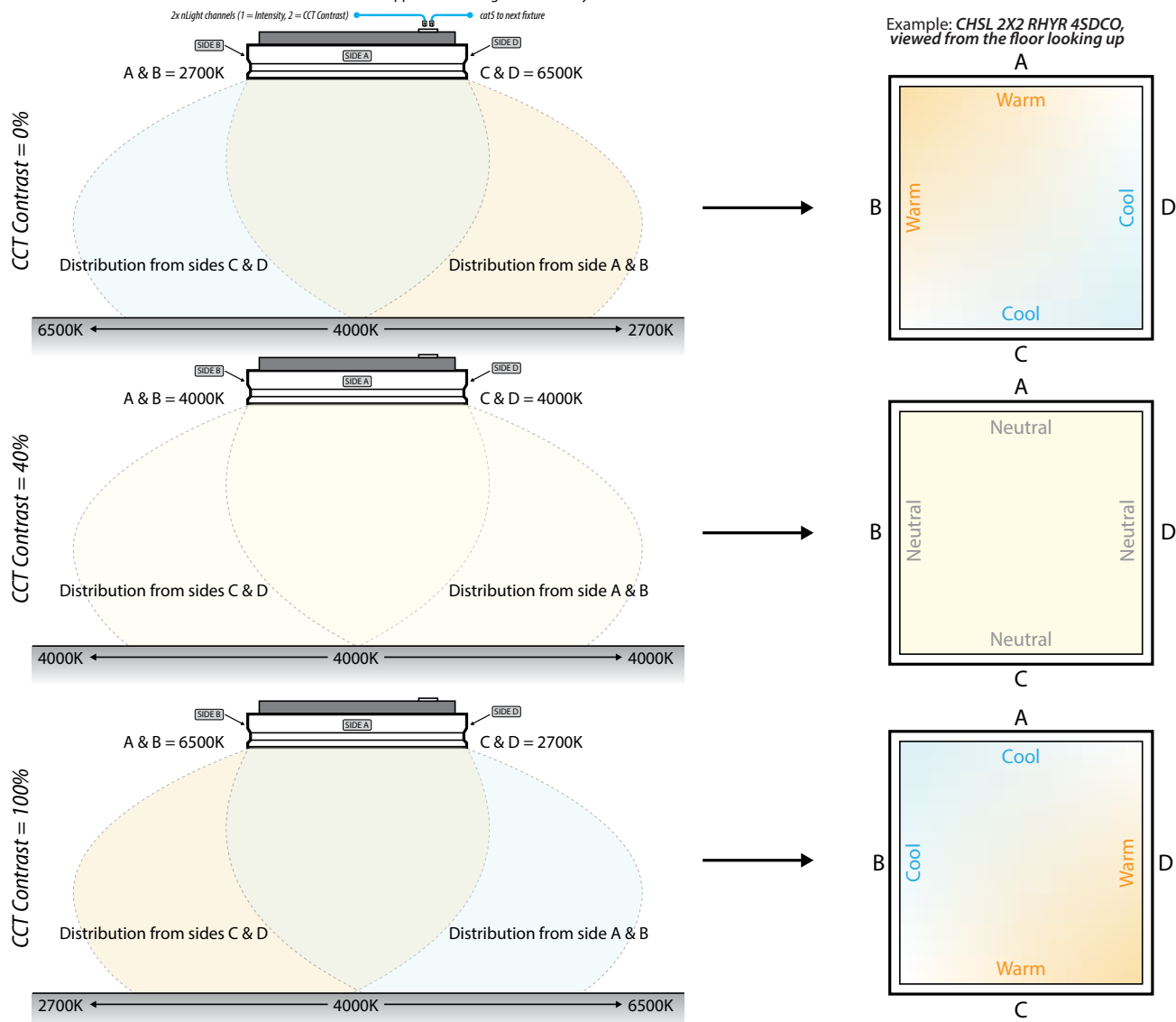
Fixture Performance

		Rhythm Range (RHYR)						Productivity Range (PROR)					
		Total Lumens			Lumens Per Watt			Total Lumens			Lumens Per Watt		
LED Output	Directional Gradient	2700K	4600K	6500K	2700K	4600K	6500K	3000K	4000K	5000K	3000K	4000K	5000K
1000LM	1SD	770	762	874	74.1	83.3	90.0	887	783	841	85.3	85.6	86.6
	2SDx	858	912	982	84.1	94.7	105.2	1005	956	922	98.5	99.2	98.9
	4SD	844	897	965	77.8	87.5	97.2	988	940	906	91.0	91.7	91.4
1500LM	1SD	1199	1114	1349	81.6	92.0	96.8	1356	1127	1326	92.3	93.0	95.1
	2SDx	1287	1322	1466	98.3	110.6	121.1	1495	1373	1394	114.1	114.9	115.2
	4SD	1281	1315	1459	97.8	110.1	120.5	1487	1366	1387	113.5	114.3	114.6
2000LM	1SD	1673	1600	1872	81.2	95.0	96.5	1866	1647	1834	90.6	97.8	94.5
	2SDx	1788	1746	2026	99.4	111.7	120.1	2053	1788	1958	114.1	114.4	116.1
	4SD	1787	1745	2024	99.3	111.6	120.0	2051	1787	1956	114.0	114.3	116.0
2500LM	2SDx	2192	2024	2469	92.5	103.5	109.7	2487	2039	2428	105.0	104.3	107.9
	4SD	2194	2026	2471	96.2	107.7	114.1	2489	2041	2430	109.2	108.5	112.2
3000LM	2SDx	2537	2365	2853	96.1	108.8	114.0	2866	2397	2802	108.5	110.3	112.0
	4SD	2566	2392	2885	97.2	110.1	115.3	2898	2424	2834	109.8	111.5	113.3
3500LM	2SDx	2965	2799	3326	95.0	109.4	112.8	3328	2860	3262	106.7	111.7	110.7
	4SD	3023	2854	3391	96.9	111.5	115.0	3394	2916	3327	108.8	113.9	112.9
4000LM	2SDx	3442	3292	3852	91.6	107.2	108.9	3840	3390	3773	102.2	110.4	106.6
	4SD	3529	3376	3950	97.5	114.0	115.8	3938	3476	3869	108.8	117.4	113.5

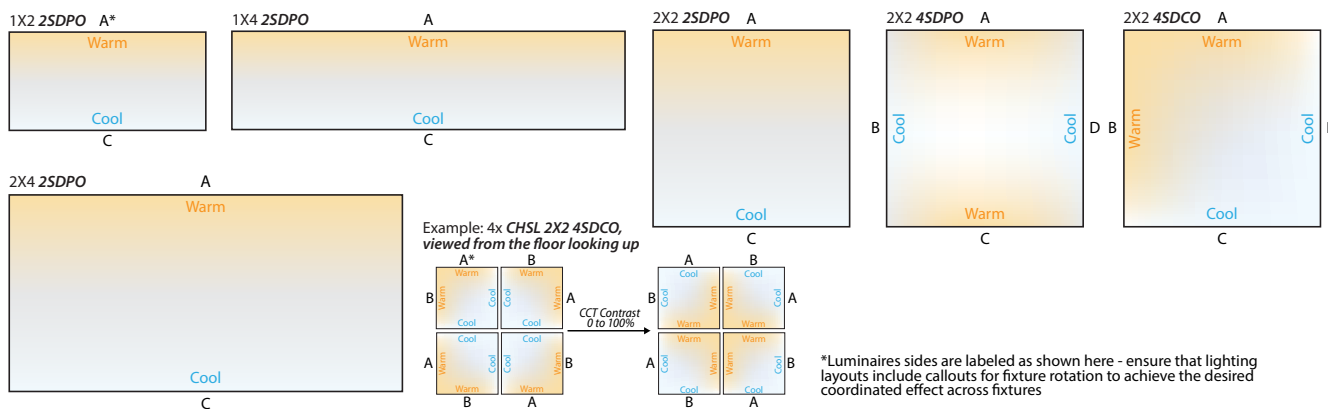


CHSL CCT Contrast - Typical Behavior

Chisel with CCT Contrast allows you to achieve a dynamic color temperature gradient effect with simplified controls. Fixtures have a single 2-channel nLO where one channel controls intensity of all sides and the other channel controls the contrast in CCT between edges - as one side of the fixture color tunes from warm to cool, the other side dependently tunes from cool to warm. The output CCT of the fixture remains fixed at 4000K even as the reflector appearance changes dramatically.

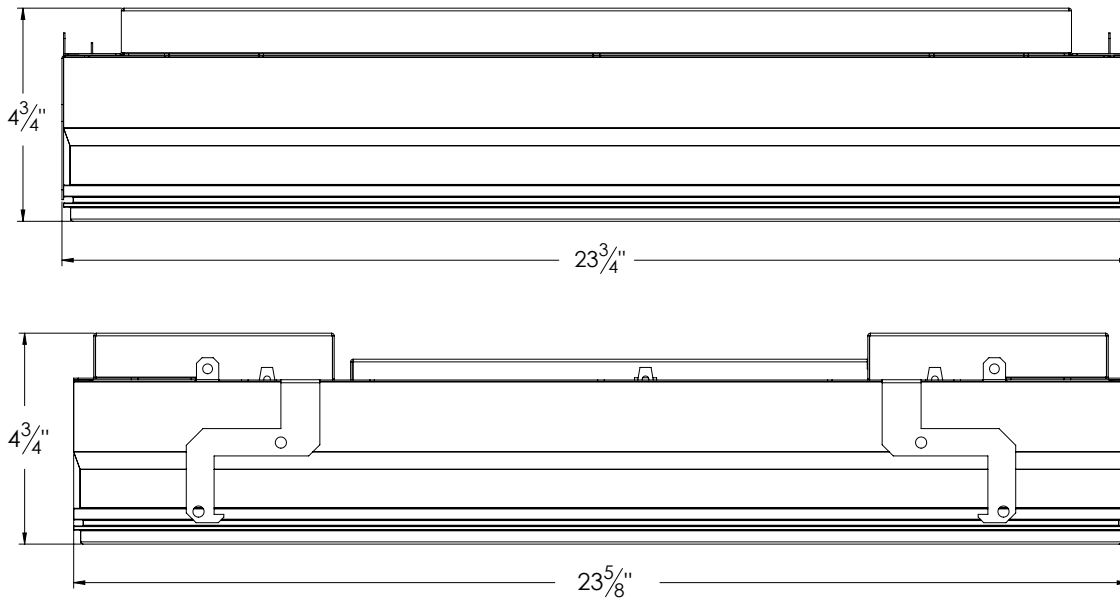


CHSL CCT Contrast - Sizes and Options

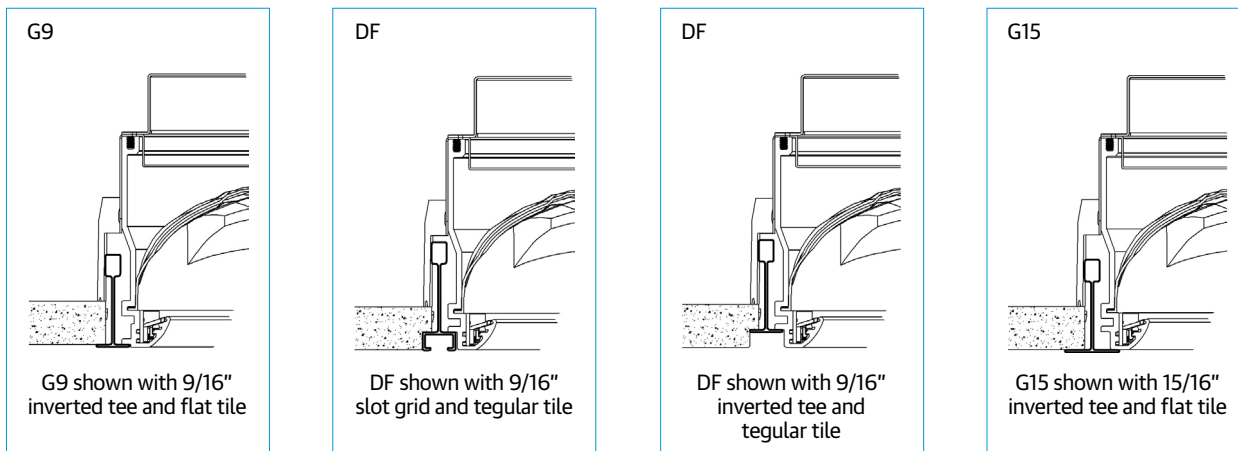




Technical Drawing



Ceiling Trim



A+ Capable Luminaire

This item is an A+ capable luminaire, which has been designed and tested to provide consistent color appearance and out-of-the-box control capability with simple commissioning when used with Acuity Brands controls products.

All configurations of this luminaire are calibrated and tested to meet the Acuity Brands' specification for chromatic consistency - including color rendering, color fidelity and color temperature tolerance around standard CIE chromaticity coordinates.

To learn more about A+, visit www.acuitybrands.com/aplus.



Suggested Wall Pods (order separately)



nPODM 2P DX CCT



nPODM 4S DX



nPODM 4S

Typical nLight network Layout

