

## Specifications

### MLC 64 RS VC D

#### Control — host ports

Serial control port.....	1 bidirectional RS-232 on a 3.5 mm captive screw connector, 3 pole
Baud rate and protocol.....	9600 baud, 8 data bits, 1 stop bit, no parity
Serial control pin configuration .....	Pin 1 = Tx, pin 2 = Rx, pin 3 = Gnd
USB control port.....	1 front panel female USB mini B
USB standards .....	USB 2.0, low speed
IR learning frequencies.....	30 kHz to 60 kHz
IR learning distance.....	4" (10 cm) to 14" (36 cm) from the receiver
Program control .....	Extron configuration program for Windows® Extron Simple Instruction Set (SIS™)

#### Control — serial port

Display control port.....	(1) 3.5 mm captive screw connector, 2 pole for unidirectional RS-232 control (±5 V)
Baud rate and protocol (RS-232) ...	9600 (default), 19200, 38400, 57600, 115,200 baud; 8 (default) or 7 data bits; 1 stop bit; no parity (default), or even or odd parity

#### Control — IR/Serial port

IR control port.....	(1) 3.5 mm captive screw connector, 2 pole for IR/serial* (transmit only) TTL level (0 to 5 V) modulated infrared control from 30 kHz up to 60 kHz, or ±5 V RS-232 control (transmit only) *IR/serial ports are configurable via software; serial communication is the default.
Baud rate and protocol .....	For RS models: 9600 (default), 19200, 38400, 57600, 115,200 baud; 8 (default) or 7 data bits; 1 stop bit; no parity (default), or even or odd parity

#### Control — relay

Number/type.....	2 momentary or latching (configurable via software)
Connector.....	(1) 3.5 mm captive screw connector, 3 pole
Contact rating.....	24 V, 1 A

#### Control — digital input monitoring port

Number/type.....	1 digital input (configurable)
Connector.....	(1) 3.5 mm captive screw connector, 2 pole
Digital inputs	
Input voltage range.....	0-24 VDC
Input impedance .....	12k ohms
Programmable pullup .....	2k ohms to +5 VDC
Threshold low to high .....	>1.5 VDC
Threshold high to low .....	<1.0 VDC

#### Control — peripheral audio equipment

Volume control.....	0 to 10 VDC variable voltage, positive logic (the higher the voltage, the higher the volume)
Mute control .....	Momentary push switch with latching contact closure during mute; LED mute indication
Pin configuration .....	Pin 1 = +10 VDC, pin 2 = volume/mute (variable voltage), pin 3 = Gnd
Reference voltage .....	10 VDC

## Specifications • MLC 64 RS VC D (Continued)

### General

#### Power supply

MLC 64 RS VC D .....	External
	Input: 100-240 VAC, 50-60 Hz
	Output: 12 VDC, 0.5 A, 6.0 watts

Remote volume control device.	10 VDC, supplied by the Extron device being controlled
-------------------------------	--

#### Power consumption

##### MLC 64 RS VC D

Device .....	1.8 watts, 12 VDC max.
Device and power supply...	2.6 watts, 100-240 VAC, 50-60 Hz

Remote volume control device.	Unmute mode: 0.2 watts
	Mute mode: 0.5 watts

Temperature/humidity .....	Storage: -40 to +158 °F (-40 to +70 °C) / 10% to 90%, noncondensing
	Operating: +32 to +122 °F (0 to +50 °C) / 10% to 90%, noncondensing

Cooling .....	Convection, no vents
---------------	----------------------

#### Thermal dissipation

##### MLC 64 RS VC D

Device .....	6.2 BTU/hr
Device and power supply...	8.8 BTU/hr

Remote volume control device.	1.7 BTU/hr
-------------------------------	------------

#### Mounting

Rack mount.....	No
-----------------	----

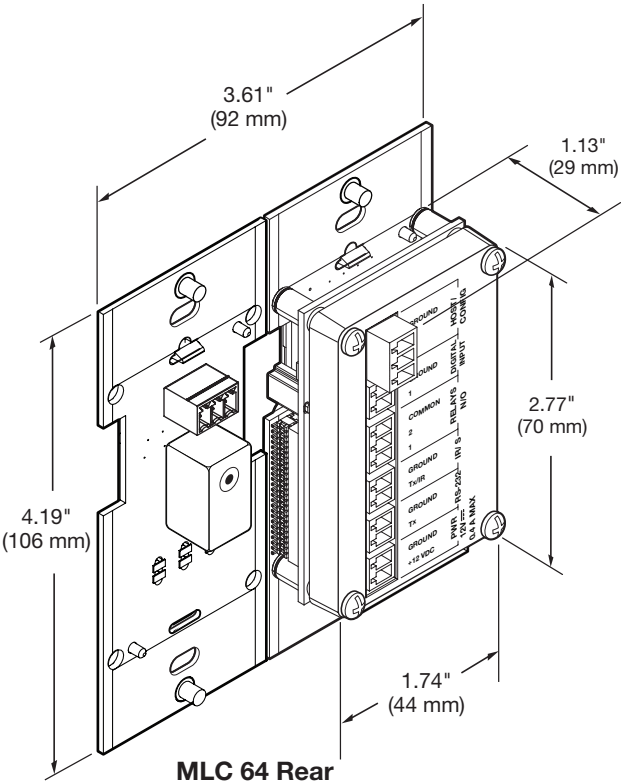
Furniture or wall mount.....	Mounts in a standard 2 gang US electrical junction box (1.50" depth) or with included mud ring.
------------------------------	---

Enclosure type .....	Plastic
----------------------	---------

Specifications • MLC 64 RS VC D (Continued)

Enclosure dimensions

- Faceplate ..... Fits the opening in a 2 gang decorator-style wallplate.
- Devices ..... 4.19" H x 3.61" W x 1.5" D or 1.9" D\*  
(106 mm H x 92 mm W x 37 mm D or 48 mm D\*)  
(Depth includes connectors and buttons. Allow enough depth in the junction box for device plus cable clearance.)  
\*Depth including the knob



- Product weight ..... 1.1 lb (0.5 kg)
- Regulatory compliance..... CE, C-Tick, c-UL, FCC Class A, ICES, UL, VCCI Class A  
Complies with the appropriate requirements of RoHS, WEEE, and  
Section 508 of the Rehabilitation Act (29 U.S.C. 794d).
- Product warranty ..... 3 years parts and labor
- Everlast power supply warranty..... 7 years parts and labor

- NOTE:** All nominal levels are at  $\pm 10\%$ .
- NOTE:** Specifications are subject to change without notice.
- NOTE:** Shipping weights and dimensions are available at [www.extron.com](http://www.extron.com).

4506-D5-120618