



Q·2

RGBW LED flood blind strobe



Description

The extremely bright Q-2 is a compact and lightweight flood/blinder/strobe with fast response time, smooth color mixing with no hotspots, and individually controllable segments for pixel mapping applications. Sharing some of the key features of the larger Q-7, like factory color calibration, wide angle lighting coverage, and a powerful strobe effect, the Q-2 also includes the benefits of three-segment pixel mapping control and low power consumption. Because of its rich feature set, powerful output, efficiency, small size, and easy rigging options, the Q-2 is a must-have flood/blinder/strobe for any rental company, touring production, or corporate event.

Features and benefits

- ✓ High-performance IP65 RGBW LED light source
- ✓ 110° wide-angle coverage / Powerful high-speed strobe
- ✓ 3 individually controllable segments
- ✓ Only 6.0kg (13.2 lbs) / Low power consumption (200W)
- ✓ 2,000K-10,000K CTC control
- ✓ Accurate 16bit dimming performance
- ✓ Practically maintenance-free
- ✓ Flicker-free / Programmable scenes

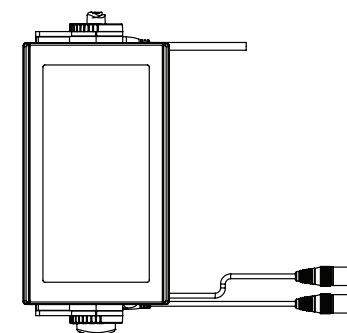
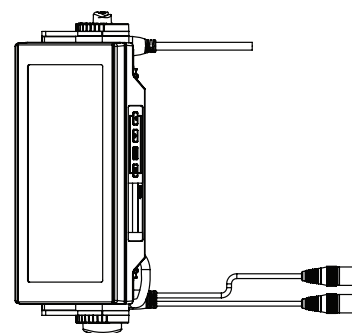
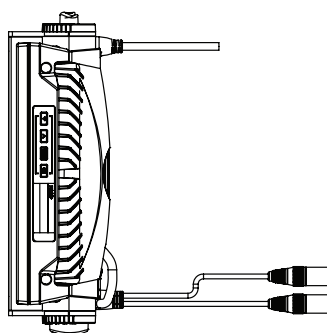
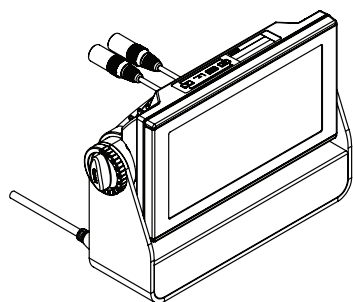
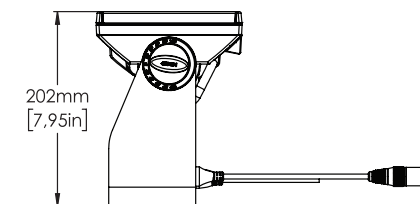
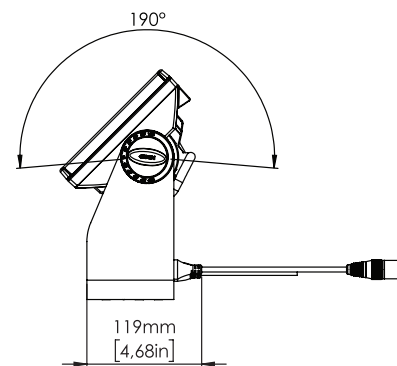
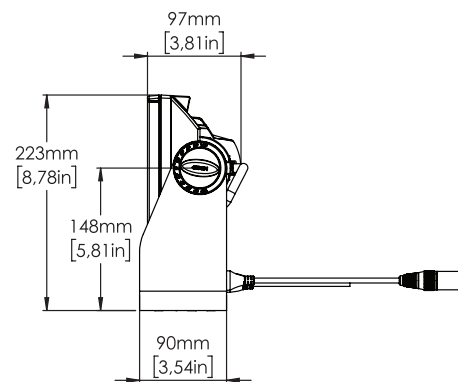
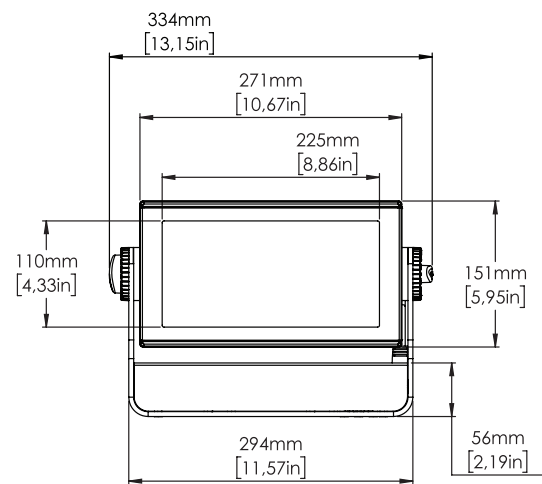
Certifications & classifications

IP65

RoHS

CE





Specification

Optical Data	LED expected lifetime	50,000 hours
	Lightsource	864 x RGBW SMD LEDs (5,700K)
	Native lens options	110°
	Optional filters	Extra medium angle soft diffusion, Q, external
		Extra wide angle soft diffusion, Q, external
Elliptical horizontal effect, Q, external		
Elliptical vertical effect, Q, external		
Photometric	Color temperature range	2000K - 10000K
	Efficacy	46 lm/W
	Light output all LEDs on	9000 lm
	Light output blue	562 lm
	Light output green	2250 lm
	Light output red	1379 lm
	Lumen per kilogram	1500 lm / Kg
	Lux @ 10m	35 lux
	Lux @ 5m	141 lux
	Native beam angle(s)	107° (with 110° lens)
	Native field angle(s)	154°
Physical	Color options	Black - RAL 9004
		Custom color - Any RAL
		White - RAL 9010
	Effective Projected Area	0.96 Square ft
	IK rating	IK05
	IP class	IP65
	Lens material	Tempered glass front
	Material	Aluminium
	Net dimensions	334 x 223 x 105 mm
	Net dimensions inches	13.2 x 8.8 x 4.1 inches
Net weight	6 kg (13.2 lbs)	
Features	Color calibration	SGM proprietary, full color calibration
	Dimming	2 Smooth fade in, DMX-controllable curves: gamma corrected, and linear
	Filters	Optional external spread angle filters (requires Accessory Holder)
	LED panel	3 individually controllable segments
	Strobe	Ultra-high-speed strobe effects

	Tilt	Pixel strobe feature (up to 3 segments) 0 - 190°
Electrical	Electrical protection	Overload protection
	Input voltage, absolute max. rating	90 - 305 VAC; 50 / 60 Hz
	Input voltage, nominal	100 - 277 VAC; 50 / 60 Hz
	Max inrush current 230VAC	75 A
	Max power consumption	265 W
	Power factor	0.96 PF (230 V)
	Power Supply Unit	Inbuilt IP 67 Auto-ranging electronic switch-mode
	Standby power consumption	5 W
Programming and Control	16-bit control	Dimmer, Red, Green, Blue, White
	Cabled DMX	5 pin XLR input/output
	DMX channels	3, 6, 9, 12, 15 or 22
	DMX modes	6
	Protocol	USITT DMX512A RDM ANSI E1.20
	Setting and addressing	OLED graphical display / 4 buttons RDM ANSI E1.20 Standalone mode
	Standalone mode	Quick Color Up to 24 programmable scenes
Connections	DMX data in/out	2 IP65 XLR 5-pin cables 0.5m (permanently wired)
	Power	Power cable 1 meter with bare ends (permanently wired)
Installation	Mounting point	2 quarter-turn locking points for one Omega bracket
	Orientation	Any
	Rigging possibilities	Floor stand (included) or hanging (Omega clamps included)
	Safety features	Bottom mount for safety wire Minimum distance to combustible materials: 0.3 meter (11 in).
Thermal	Cooling	Active, Forced Air, Temperature-regulated
	Humidity (max.)	98 %
	Temperature range, operating	-40°C to 50°C
	Temperature range, start-up	-20°C to 50°C
	Temperature range, storage	-40°C to 80°C

	Thermal protection	Automatic overtemperature protection
	Total heat dissipation, max power	904.2 BTU per hour
	Total heat dissipation, standby	17.1 BTU per hour
Included items	Included items	Mounting bracket (incl. screws) 1 Omega bracket with quarter-turn fasteners Safety instructions and installation quick guide
Conforms To	CE - 2014/30/EU: EMC Directive	EN 55103-1 EN 55103-2 EN 55015 EN 61547 EN 61000-3-2 EN 61000-3-3
	CE - 2014/35/EU: Low Voltage Directive	EN 60598-1 EN 60598-2-17 EN 62471 EN 60529
	RoHS2 Directive	2011/65/EU
	UL	UL Std. 1573
Certified To	CSA	CSA-E598-2-17-98, Ed: 1 CSA E60598-1, Ed: 3

NOTES:

Due to continuous improvements and innovations, specifications may change without notice.

LEDs' expected lifetime provided by manufacturer and obtained under manufacturer's test conditions.

Ordering information

Qty	Product name	Item number
<input type="checkbox"/>	Q-2 Color Flood, Std, BL	80030535
<input type="checkbox"/>	Q-2 Color Flood, Std, WH	80030565
<input type="checkbox"/>	Q-2 Color Flood, Std, CU	80030566
<input type="checkbox"/>		
Accessories		Item number
<input type="checkbox"/>	Omega Bracket with 1/4-turn fasteners	83060602
<input type="checkbox"/>	4-way Barndoors for P·2, Q·2, i·2	83061129
<input type="checkbox"/>	8-way Barndoor for P·2, Q·2, i·2	83061130
<input type="checkbox"/>	Accessory Holder for Q·2	83061128
<input type="checkbox"/>	Color Frame for P·2, Q·2, i·2	83061131
<input type="checkbox"/>	Floor Stand for P·2 & Q·2	83060613
<input type="checkbox"/>	Flight Case for 4 pcs P·2, Q·2, Q·2 W & i·2 incl barndoors	82051503
<input type="checkbox"/>	SGM USB uploader cable	83062011
<input type="checkbox"/>	Vacuum Test Kit	83061136
<input type="checkbox"/>	A·4	80070217
<input type="checkbox"/>	RDM Addressing Tool	
<input type="checkbox"/>	Spigot adapter for omega bracket	83060639
<input type="checkbox"/>		



Headquarter +45 70 20 74 00

Mail info@sgmlight.com

Website sgmlight.com