

# DIN-PWS50

## DIN Rail 50 Watt Cresnet Power Supply

The DIN-PWS50 is a 50 Watt Cresnet Power Supply module designed to snap onto a standard DIN rail for installation in a wall mount enclosure. DIN rail mounting enables modular installation alongside Crestron DIN Rail lighting and automation control modules and other third-party DIN rail mountable devices. All wiring connections are made using screw terminals positioned along the top and bottom, clearly accessible from the front for easy installation and servicing. Three (3) Cresnet power ports are provided.

### SPECIFICATIONS

#### Output Power

Per Output Port: 50 Watts (2.08 Amps @ 24 Volts DC, Regulated), limited power source

Module Total: 50 Watts (2.08 Amps @ 24 Volts DC, Regulated)

Ripple/Noise: <1%

#### Power Requirements

Line Power: 60 Watts @ 100-240 Volts AC, 50/60 Hz

#### Connections

100-240V~50/60 Hz: (1) set of (3) captive screw terminals;

Line power input, neutral, and ground with pass-through;

NET: (3) 4-pin 3.5mm detachable terminal blocks, paralleled;

FUSE: DC output fuse, T3.15AH;

#### LED Indicators

24VDC: (1) green LED, indicates 24 Volts DC output at all

NET ports; Remains lit when fuse is blown

#### Enclosure

Light gray polycarbonate housing with polycarbonate label overlay, UL94 V-0 rated, 35mm DIN EN 60715 rail mount, DIN 43880 form factor for enclosures with 45mm front panel



cutout, occupies 6 DIN module spaces (108mm)

#### Environmental

Temperature: 32° to 104°F (0° to 40°C)

Humidity: 10% to 90% RH (non-condensing)

Heat Dissipation: 26 BTU/hr

#### Dimensions

Height: 3.71 in (9.42 cm)

Width: 4.18 in (10.60 cm)

Depth: 2.29 in (5.80 cm)

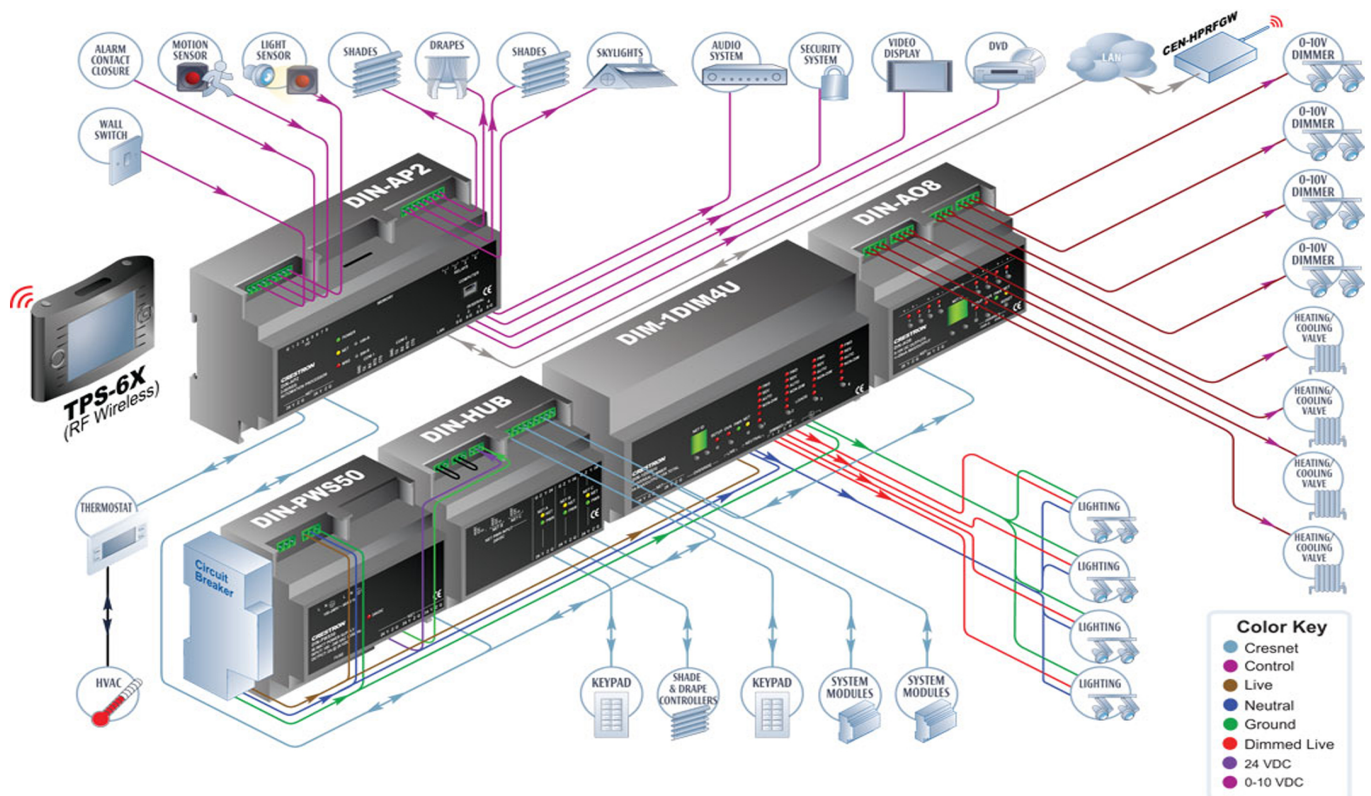
#### Weight

6 oz (170 g)

# DIN-PWS50

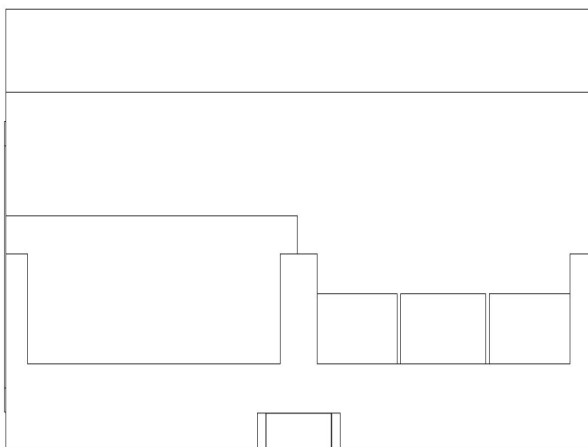
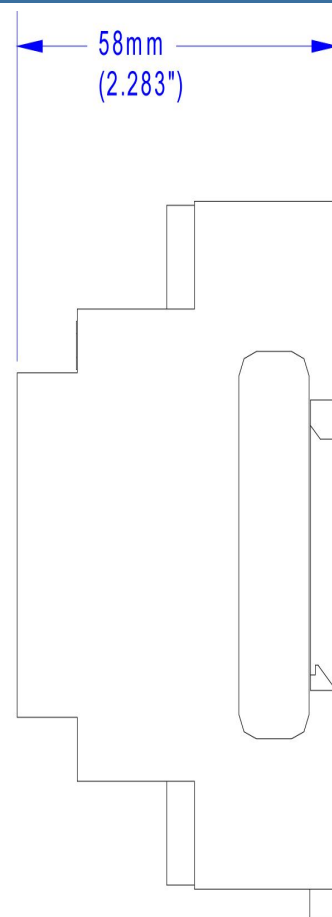
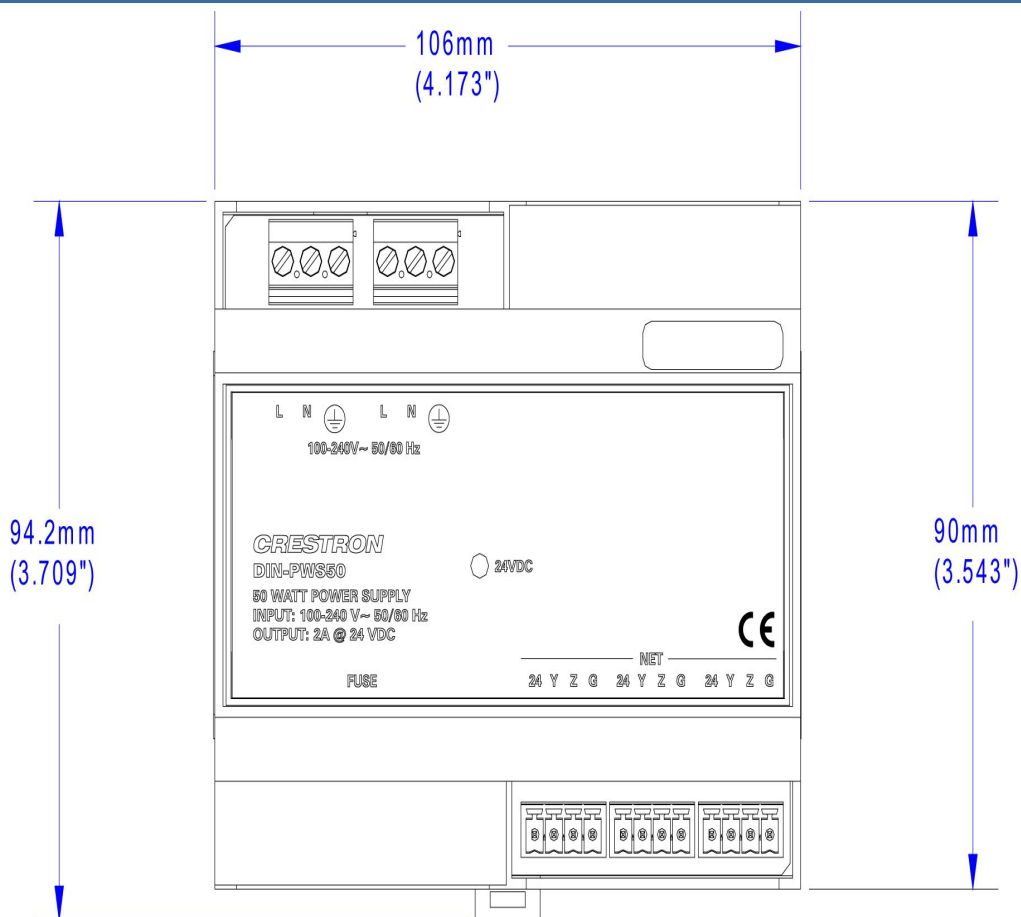
## DIN Rail 50 Watt Cresnet Power Supply

## DIN Rail Automation System



# DIN-PWS50

## DIN Rail 50 Watt Cresnet Power Supply



# DIN-PWS50

## DIN Rail 50 Watt Cresnet Power Supply

